



Artist Transport User Guide

EuControl v3.0

Legal Notices

© 2013 Avid Technology, Inc., ("Avid"), all rights reserved. This guide may not be duplicated in whole or in part without the written consent of Avid.

003, 192 Digital I/O, 192 I/O, 96 I/O, 96i I/O, Adrenaline, AirSpeed, ALEX, Alienbrain, AME, AniMatte, Archive, Archive II, Assistant Station, AudioPages, AudioStation, AutoLoop, AutoSync, Avid, Avid Active, Avid Advanced Response, Avid DNA, Avid DNxcel, Avid DNxHD, Avid DS Assist Station, Avid Ignite, Avid Liquid, Avid Media Engine, Avid Media Processor, Avid MEDIArray, Avid Mojo, Avid Remote Response, Avid Unity, Avid Unity ISIS, Avid VideoRAID, AvidRAID, AvidShare, AVIDStripe, AVX, Beat Detective, Beauty Without The Bandwidth, Beyond Reality, BF Essentials, Bomb Factory, Bruno, C|24, CaptureManager, ChromaCurve, ChromaWheel, Cineractive Engine, Cineractive Player, Cineractive Viewer, Color Conductor, Command|8, Control|24, Cosmonaut Voice, Countdown, d2, d3, DAE, D-Command, D-Control, Deko, DekoCast, D-Fi, D-fx, Digi 002, Digi 003, DigiBase, Digidesign, Digidesign Audio Engine, Digidesign Development Partners, Digidesign Intelligent Noise Reduction, Digidesign TDM Bus, DigiLink, DigiMeter, DigiPanner, DigiProNet, DigiRack, DigiSerial, DigiSnake, DigiSystem, Digital Choreography, Digital Nonlinear Accelerator, DigiTest, DigiTranslator, DigiWear, DINR, DNxchange, Do More, DPP-1, D-Show, DSP Manager, DS-StorageCalc, DV Toolkit, DVD Complete, D-Verb, Eleven, EM, Euphonix, EUCON, EveryPhase, Expander, ExpertRender, Fairchild, FastBreak, Fast Track, Film Cutter, FilmScribe, Flexevent, FluidMotion, Frame Chase, FXDeko, HD Core, HD Process, HDpack, Home-to-Hollywood, HyperSPACE, HyperSPACE HDCAM, iKnowledge, Impact, Improv, iNEWS, iNEWS Assign, iNEWS ControlAir, InGame, Instantwrite, Instinct, Intelligent Content Management, Intelligent Digital Actor Technology, IntelliRender, Intelli-Sat, Intelli-Sat Broadcasting Recording Manager, InterFX, Interplay, inTONE, Intraframe, iS Expander, iS9, iS18, iS23, iS36, ISIS, IsoSync, LaunchPad, LeaderPlus, LFX, Lightning, Link & Sync, ListSync, LKT-200, Lo-Fi, MachineControl, Magic Mask, Make Anything Hollywood, make manage move|media, Marquee, MassivePack, MassivePack Pro, Maxim, Mbox, Media Composer, MediaFlow, MediaLog, MediaMix, Media Reader, Media Recorder, MEDIArray, MediaServer, MediaShare, MetaFuze, MetaSync, MIDI I/O, Mix Rack, Moviestar, MultiShell, NaturalMatch, NewsCutter, NewsView, NewsVision, Nitris, NL3D, NLP, NSDOS, NSWIN, OMF, OMF Interchange, OMM, OnDVD, Open Media Framework, Open Media Management, Painterly Effects, Palladium, Personal Q, PET, Podcast Factory, PowerSwap, PRE, ProControl, ProEncode, Profiler, Pro Tools, Pro Tools|HD, Pro Tools LE, Pro Tools M-Powered, Pro Transfer, QuickPunch, QuietDrive, Realtime Motion Synthesis, Recti-Fi, Reel Tape Delay, Reel Tape Flanger, Reel Tape Saturation, Reprise, Res Rocket Surfer, Reso, RetroLoop, Reverb One, ReVibe, Revolution, rS9, rS18, RTAS, Salesview, Sci-Fi, Scorch, ScriptSync, SecureProductionEnvironment, Shape-to-Shape, ShuttleCase, Sibelius, SimulPlay, SimulRecord, Slightly Rude Compressor, Smack!, Soft SampleCell, Soft-Clip Limiter, SoundReplacer, SPACE, SPACESHift, SpectraGraph, SpectraMatte, SteadyGlide, Streamfactory, Streamgenie, StreamRAID, SubCap, Sundance, Sundance Digital, SurroundScope, Symphony, SYNC HD, SYNC I/O, Synchronic, SynchroScope, Syntax, TDM FlexCable, TechFlix, Tel-Ray, Thunder, TimeLiner, Titansync, Titan, TL Aggro, TL AutoPan, TL Drum Rehab, TL Everyphase, TL Fauxlder, TL In Tune, TL MasterMeter, TL Metro, TL Space, TL Utilities, tools for storytellers, Transit, TransJammer, Trillium Lane Labs, TruTouch, UnityRAID, Vari-Fi, Video the Web Way, VideoRAID, VideoSPACE, VTEM, Work-N-Play, Xdeck, X-Form, and XMON are either registered trademarks or trademarks of Avid Technology, Inc. in the United States and/or other countries.

Bonjour, the Bonjour logo, and the Bonjour symbol are trademarks of Apple Computer, Inc.

Thunderbolt and the Thunderbolt logo are trademarks of Intel Corporation in the U.S. and/or other countries.

This product may be protected by one or more U.S. and non-U.S. patents. Details are available at www.avid.com/patents.

Product features, specifications, system requirements, and availability are subject to change without notice.

Contents

Chapter 1. Introduction	1
What's Included	1
System Requirements and Compatibility	2
Registration	2
About This Guide	2
About www.avid.com	3
Chapter 2. Installation and Setup	5
Unpacking and Elevating the Artist Transport	5
Attaching an Artist Transport to Additional Units	6
Installing Software and Hardware	7
Chapter 3. Artist Transport Operation	11
Operational Basics	12
POWER	12
SHOW Key	12
Soft Keys	13
Transport Keys	13
Numeric Keypad	14
Jog Wheel and Shuttle Ring	14
Application/Workstation Key	15
SHIFT Key	16
Common Tasks	16
Chapter 4. Soft Keys	19
Command Types	22
Chapter 5. EuControl	27
Surfaces	27
Workstations	29
General	30
Preferences	31
Assign	32
Layouts	33
Soft Keys	33
Chapter 6. Setting IP Addresses	35
Appendix A. Compliance Information	37
Environmental Compliance	37
EMC (Electromagnetic Compliance)	38

Chapter 1: Introduction

The Artist Control, Artist Mix, Artist Transport, and Artist Color comprise the Artist Series family of media controllers. They use a 100 Mbs Ethernet EUCON™ connection to control audio and video applications running on a workstation computer. EUCON is a high-speed communication protocol and enables control of virtually every application feature.

Each Artist Series media controller can run as a standalone device. Up to four Artist Mixes can be used with an optional Artist Control and/or Artist Transport to create a larger control surface. Artist Series media controllers borrow many features from the MC Pro and System 5-MC.

The Artist Transport supports two types of applications:

- EUCON-aware applications (such as Pro Tools™ 9 and higher, Media Composer™, Cubase, Nuendo, and Final Cut Pro) are written to directly support the EUCON protocol. They provide the highest level of integration, high-resolution controls, and high-speed connectivity.
- Non-EUCON-aware applications that support Mackie Control or HUI (such as Live, Reason, and Pro Tools 8.x and lower) can control many functions but are less integrated than EUCON-aware applications.

The Artist Transport can provide some functionality over non-EUCON-aware applications that do not support HUI or Mackie Control by sending out keystroke commands over EUCON.

EuControl Software

The EuControl software application is responsible for finding, linking, and communicating with all Artist Series media controllers on the network. EuControl must be installed on the computer that runs the applications you want to control before using Artist Series controllers.

What's Included

- Artist Transport, with riser brackets
- EuControl software installer disc
- 1 Ethernet Crossover cable
- Power supply
- Artist Transport Quick Setup
- Registration Information Card

System Requirements and Compatibility

Avid can only assure compatibility and provide support for hardware and software it has tested and approved.

For downloads and other Artist Series resources, visit:

www.avid.com/artistsupport

Registration

Review the enclosed Registration Information Card and follow the instructions on it to quickly register your purchase online.

By registering, you become eligible to receive the following:

- Technical support information
- Software update and upgrade notices
- Hardware warranty information

About This Guide

Conventions Used in This Guide

All of our guides use the following conventions to indicate menu choices and key commands:

Convention	Action
File > Save	Choose Save from the File menu
Control+N	Hold down the Control key and press the N key
Control-click	Hold down the Control key and click the mouse button
Right-click	Click with the right mouse button

The names of Commands, Options, and Settings that appear on-screen are in a different font. The names of keys on Artist Series hardware are in bold (such as **SEL**). The **SHIFT** key on Artist Series hardware is indicated by bold text, in all-caps (**SHIFT**) to distinguish it from references to the Shift key on your QWERTY keyboard.

The following symbols are used to highlight important information:



User Tips are helpful hints for getting the most from your system.



Important Notices include information that could affect your data or the performance of your system.



Shortcuts show you useful keyboard or mouse shortcuts.



Cross References point to related sections in this guide and other Avid guides.

About www.avid.com

The Avid website (www.avid.com) is your best online source for information to help you get the most out of your Artist Series controllers. The following are just a few of the services and features available.

Product Registration Register your purchase online.

Support and Downloads Contact Avid Customer Success (technical support); download software updates and the latest online manuals; browse the Compatibility documents for system requirements; search the online Knowledge Base or join the worldwide Avid community on the User Conference.

Training and Education Study on your own using courses available online or find out how you can learn in a classroom setting at a certified Avid training center.

Products and Developers Learn about Avid products; download demo software or learn about our Development Partners and their plug-ins, applications, and hardware.

News and Events Get the latest news from Avid or sign up for a demo.

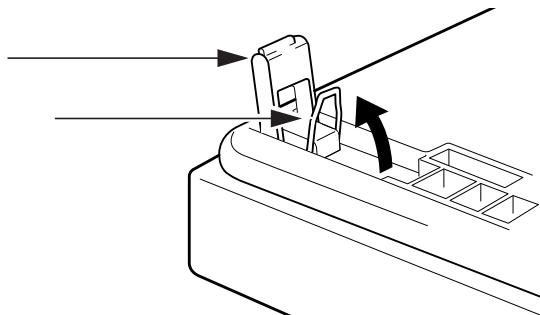
Chapter 2: Installation and Setup

Unpacking and Elevating the Artist Transport

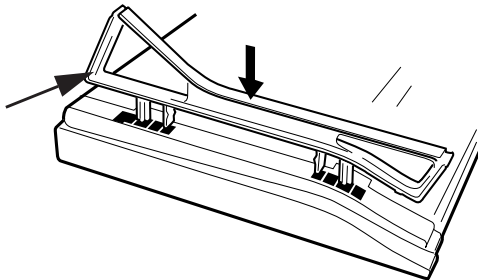
Unpack Artist Transport, its power supply, Installer disc, Ethernet crossover cable, and riser brackets.

Artist Transport can be elevated or angled using small foldout legs on the bottom of the unit, or elevated and angled by attaching the larger riser brackets. Since both methods require turning Artist Transport upside down, do this before attaching any cables.

Turn the unit over and place it on a soft surface. Pull out all four of the small foldout legs to moderately elevate the unit; pull out only the back two to angle the unit towards you. Pull out the metal clips from the same area as the legs and move them until they snap into the legs.



The two larger, detached riser brackets elevate and angle the unit more than the foldout legs. Use moderate force to snap them into the bottom panel.



Removing the Riser Brackets

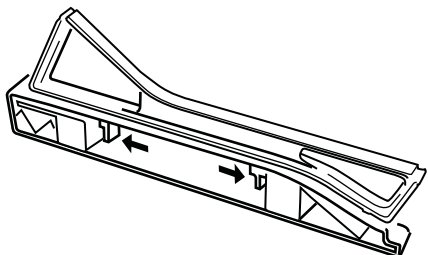
To remove the riser brackets from Artist Transport:

- 1 Slide the side panel towards the front of the unit, then pull it away).



Removing side panel

- 2 Press the tabs to release the riser bracket and lift it out of the side panel.



Tabs to release the riser bracket from the side panel

Attaching an Artist Transport to Additional Units

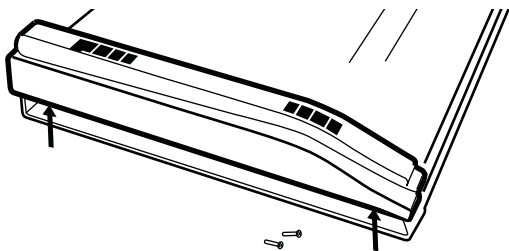
Artist Transport can be physically attached to other Artist Series units to form a larger and more stable control surface.



If you are using multiple units, see “Surfaces” on page 27 to use EuControl to link the units in the desired order.

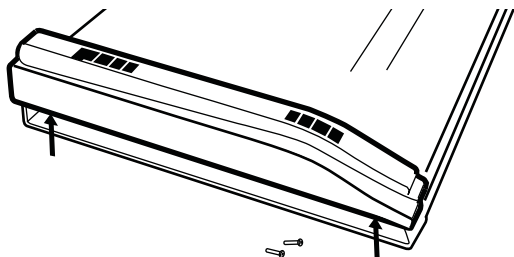
To join Artist Transport to other Artist Series units:

- 1 On the Artist Transport, use a #2 Phillips screwdriver to remove the two silver screws. The screws may be tight, so you may have to use some force.



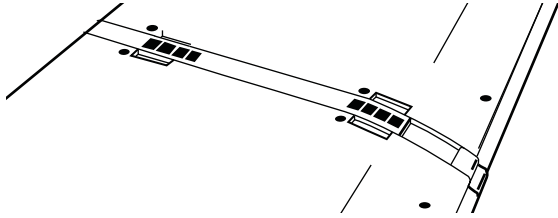
Removing screws from the bottom panel

- 2 Lift the black plastic connecting part and side panel up and out of the Artist Transport.



Removing connecting part and side panel

- 3 On the second Artist Series unit, remove the side panel on the end where it will attach to the Artist Transport. (See the *User Guide* for that unit for detailed instructions.)
- 4 Slide the connecting part of the second Artist Series unit into the Artist Transport to attach them together.



Artist Series units attached by connecting at side panel

Installing Software and Hardware

EuControl software must be installed before using any Artist Series media controller.

To install EuControl software for Artist Series media controllers:

- 1 Do one of the following:
 - Download the EuControl installer for your computer platform from www.avid.com/artistsupport. After downloading, make sure the installer is uncompressed (.dmg on Mac or .ZIP on Windows).
 - or –
 - Insert the Installer disc into your computer.
- 2 Double-click the EuControl installer application.
- 3 Follow the on-screen instructions to complete the installation.



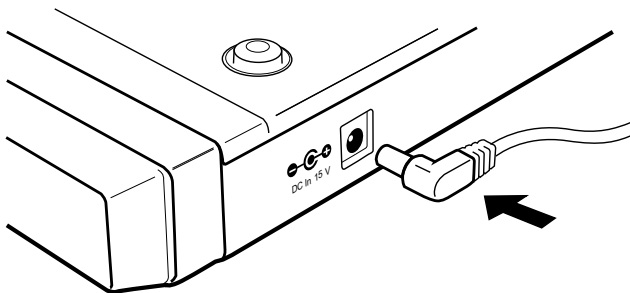
If prompted to download the most current version of EuControl, follow the onscreen instructions.

- 4 When installation is complete, click Quit (Mac) or Finish (Windows). EuControl will launch automatically and is running when the EuControl icon appears as follows:



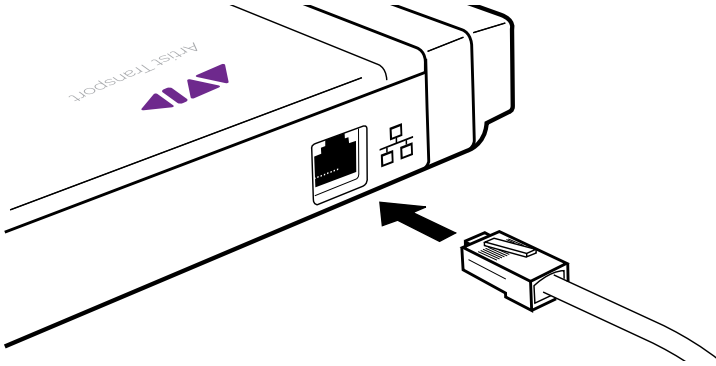
EuControl icon in Menu bar (Mac)

- On Mac, the icon is shown in your menu bar.
 - On Windows, the icon appears in the System tray (or alongside other Hidden Icons in the lower tool bar if you do not have your system configured to always show icons in the System tray).
- 5 Shut down your computer.
 - 6 Connect the DC output cable from the power supply to DC In on the left side of the Artist Transport's back panel.



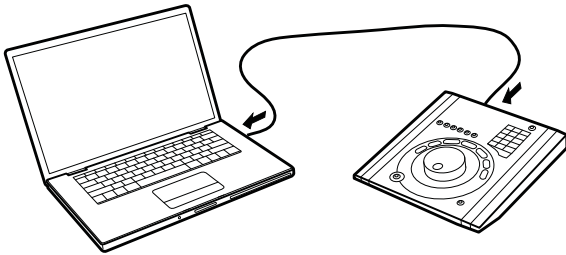
Connecting the power supply

7 Plug one end of the Ethernet crossover cable into the Ethernet jack on the back panel of the Artist Transport.



Ethernet cable and rear panel jack

8 Plug the other end of the Ethernet crossover cable into an open Ethernet jack on your computer, router, or Ethernet switch. Note that connecting directly to the computer may require removing your Internet cable.

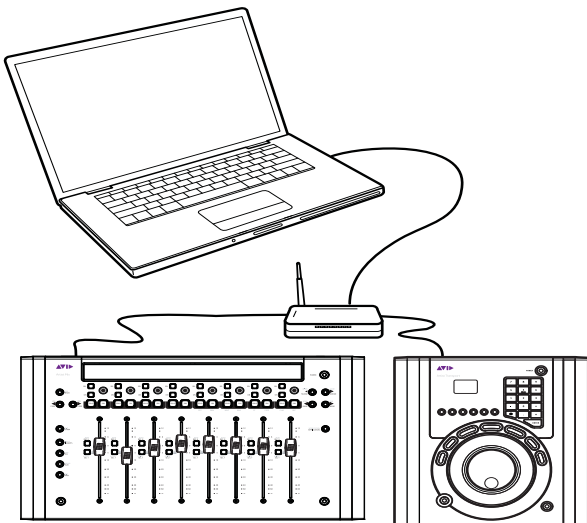


Artist Transport connected directly to a computer

If you have a Mac with two Ethernet ports, it is recommended to use Ethernet 1 rather than Ethernet 2. However, if you want to use Ethernet 2 do the following:

- Go to System Preferences > EUCON.
- Change the Network Interface to Ethernet 2.
- Restart the computer.

An Ethernet router or switch is required to connect multiple Artist Series units such as an Artist Transport with one or more Artist Mix controllers, or to connect units to a local area network.



Artist Mix and one Artist Transport connected to a computer through an Ethernet router (or switch)

9 Turn on your router (if applicable), then turn on your computer and wait until it finishes starting up.

10 Press and release the **POWER** switch on Artist Transport. Do the following, as appropriate for your operating system:

Mac Wait up to 60 seconds. A lit EuControl icon in the menu bar indicates correct installation.



EuControl icon on Mac

Windows Wait up to 60 seconds. A green icon appears in the System tray (or, in Hidden Icons if your system is not configured to show all icons in the System tray).



EuControl icon on Windows

11 If the lit EuControl icon does not appear, do any of the following:

- Shut down Artist Transport and the computer and wait 10 seconds, then turn on your router/switch (if any) and then your computer and wait until it finishes starting up. Then turn on Artist Transport.
- If you are using a pre-2002 Mac and you are using an Ethernet router or switch, you need to purchase a standard straight-through Ethernet cable (instead of the crossover Ethernet cable supplied) from a computer store.
- Refer to www.avid.com/artistsupport for the most current troubleshooting information.

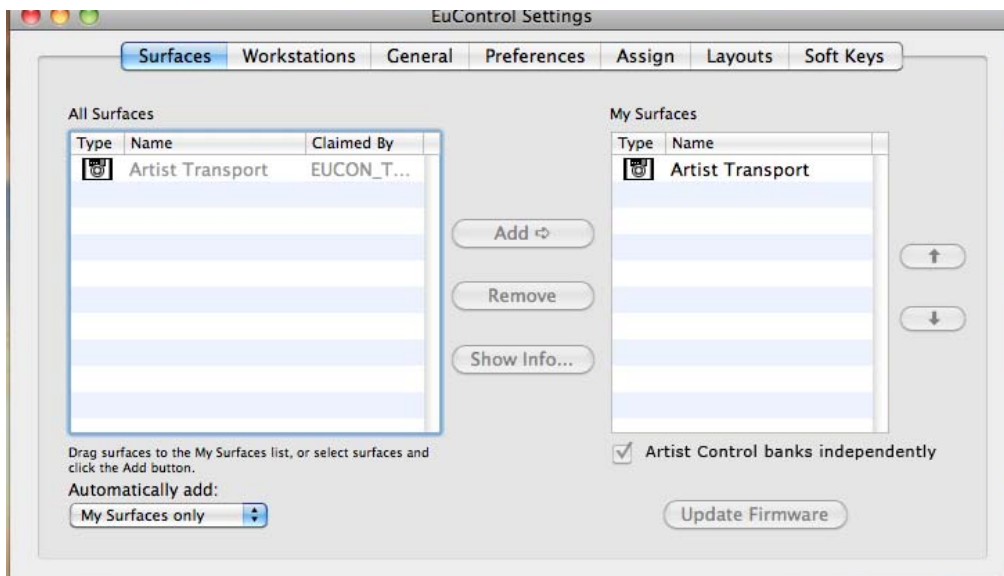
12 Launch your application (such as Pro Tools) and open a session.

13 Set up your application to work with the Artist Transport according to the instructions in the *EUCON Application Setup Guide*.

Updating Firmware

If you downloaded the latest EuControl software you may need to update the firmware on your Artist Series controllers.

- 1 Click the EuControl icon in the menu bar and select EuControl Settings (Mac), or double-click the green icon in the System tray or Hidden Icons (Windows).
- 2 Select the Surfaces tab in EuControl.
- 3 Select each Artist Series media controller in the My Surfaces list (Shift-click to select multiple devices).
- 4 Click Update Firmware to update their firmware. If a dialog displays a message that the firmware is up to date, no further action is necessary.

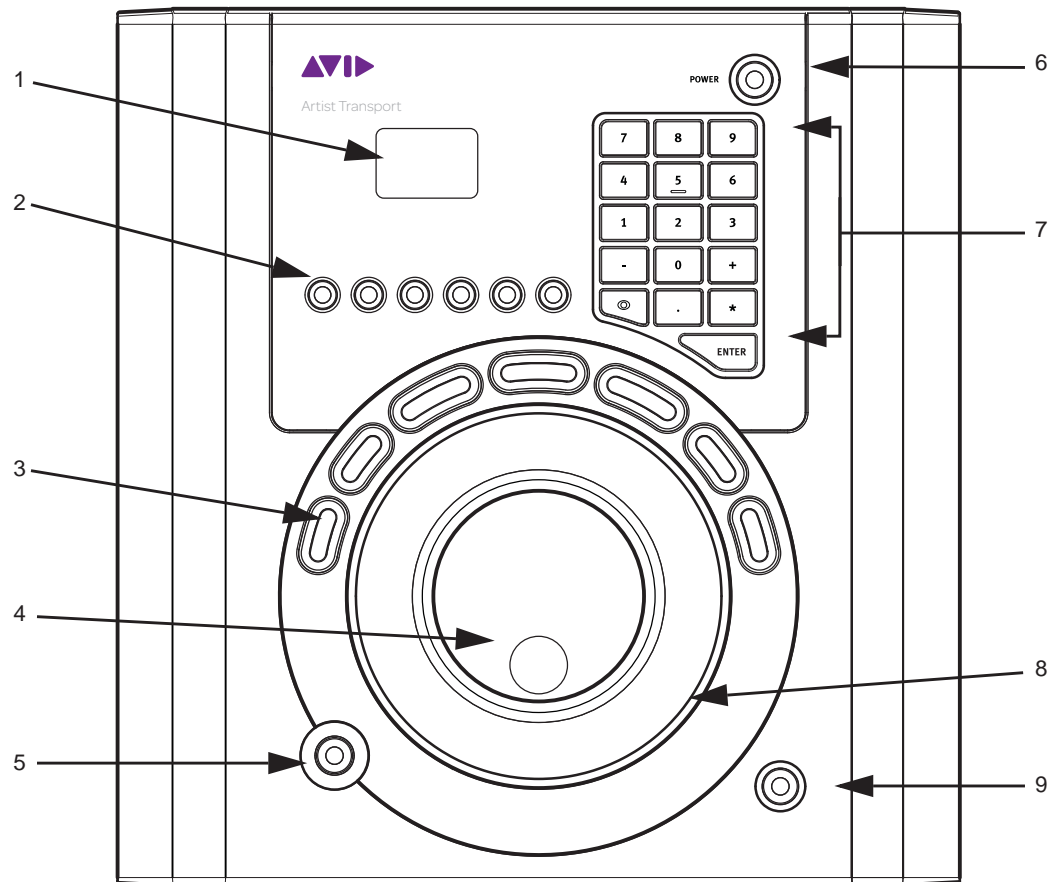


Surfaces tab

- 5 Follow the instructions in the EuControl dialog.

Chapter 3: Artist Transport Operation

Artist Transport can control many different applications. Most controls can be programmed to suit your needs. Many applications already have functions assigned to Artist Transport controls.



Artist Transport display and controls

- 1 Display
- 2 Soft Keys
- 3 Transport keys
- 4 Jog wheel
- 5 Application/Workstation key
- 6 Power switch
- 7 Numeric keypad
- 8 Shuttle Ring
- 9 **SHIFT** key

Operational Basics

The most important controls on Artist Transport are the Jog Wheel and Shuttle Ring. They typically jog and shuttle through a session or project timeline but can also be assigned different functions.

In addition to the six dedicated, assignable Soft Keys, the Numeric Pad and Transport Controls serve as additional Soft Keys and can also be reassigned.

All wheel, ring, and key assignments are stored in an Application Set for each application you use. Most applications have a default Application Set to support common tasks. You can use these as a starting point to modify and store your own Application Sets. You can restore the default Application Set at any time.

The top-most application (also called *foreground* and *in-focus*):

- Receives mouse commands and keystrokes
- Is controlled by Artist Transport
- Determines Artist Transport surface assignments

POWER

Press and release the **POWER** switch to turn the device on and off.

Reset

You can reset the surface name and (any) IP Address assigned to the unit by doing the following.

To reset the Artist Transport Surface Name and IP Address:

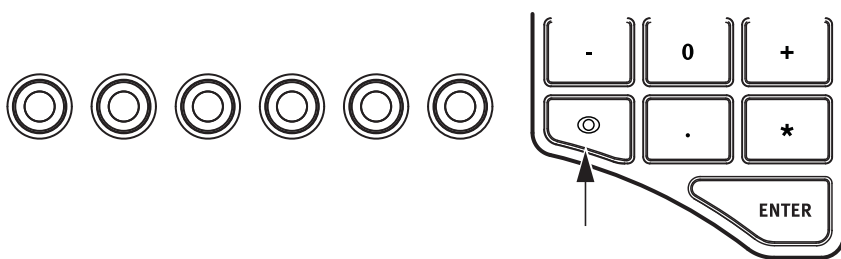
- 1 Make sure the unit is powered off.
- 2 Press and hold **Soft Key 6** while pressing the **POWER** switch.

SHOW Key

Various functions can be assigned to Artist Transport keys. The **SHOW** key lets you browse the key assignments:

To use the SHOW key:

- 1 Press and hold the **SHOW** key.



SHOW key

- 2 Press another key.

The key's function name is shown on the Artist Transport display and above the image of that key in EuControl.

Locking the SHOW Key

The **SHOW** key can be locked to let you browse multiple key functions without holding the **SHOW** key down.

To lock the **SHOW** key:

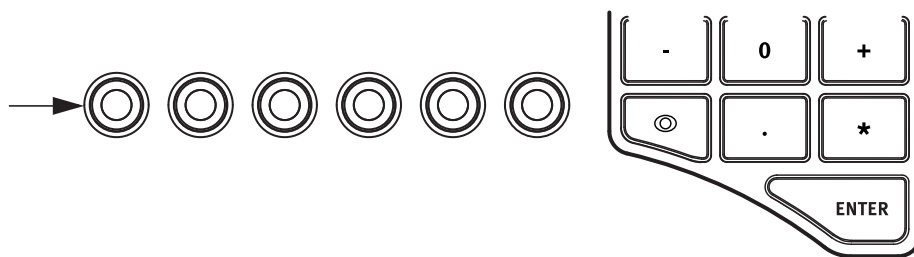
- 1 Press and release the **SHOW** key quickly and then press another key to display its assignments. Continue browsing in this manner until finished.
- 2 Press and release the **SHOW** key quickly again when finished to restore normal operation.

Soft Keys

The Soft Keys are factory programmed for each application. The six Soft Keys also let you access six additional functions by holding down the **SHIFT** key before pressing a Soft Key.

The Soft Keys can be reassigned within each application. See Chapter 4, “Soft Keys” to learn how to program them.

The Soft Keys light with a yellow LED when active.



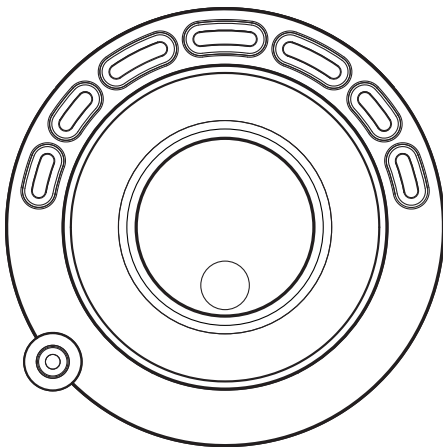
Soft keys

Transport Keys

The Transport Keys are factory-programmed for each application. The top-most application determines the current Transport Key assignments. The top-most (focussed) application is defined as the one in use before switching to EuControl. The seven Transport Keys can also access additional functions by holding down the **SHIFT** key before pressing a Transport Key.

Transport keys can be reassigned within each application. See Chapter 4, “Soft Keys” to learn how to program them.

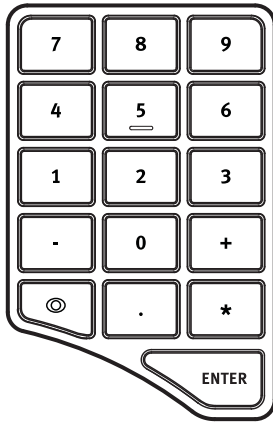
Each Transport Key lights with two LED colors to signify different functions. The left- and right-most two keys can be yellow or red. The middle three can be yellow or green. The factory default assignments are application-specific and follow industry conventions.



Transport key

Numeric Keypad

The Numeric Keypad allows numeric entry into an application. Press a key on the pad to enter that character. Holding the **SHIFT** key down accesses alternate functions on the keypad. The Numeric Keypad can be programmed to provide other functions but then numerical entry will be overridden. See Chapter 4, “Soft Keys” to learn how to program the keys.



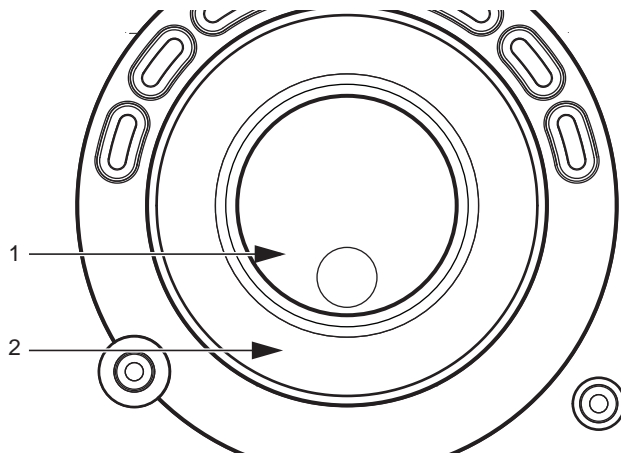
Numeric keypad

Jog Wheel and Shuttle Ring

The Jog Wheel and Shuttle Ring are similar controls with an important difference:

- Turning the Jog Wheel changes the parameter it controls by an amount proportional to how *far* the wheel is turned. When the Jog Wheel stops moving, the parameter stops changing.
- Turning the Shuttle Ring changes the parameter it controls at a *rate* determined by its position. The further the Shuttle Ring rotates, the faster the parameter changes. When held in position, the parameter continues to change at a fixed rate. When the Shuttle Ring is released, it automatically returns to its center position and the parameter stops changing.

Both the Jog Wheel and Shuttle Ring can be rotated in either direction.



Jog Wheel (1) and Shuttle Ring (2)

Jog Wheel

The Jog Wheel is typically used to do any or all of the following:


- Positioning the cursor in the timeline
- Zooming horizontally or vertically
- Editing a clip or region

In some applications, the Jog Wheel can act as an Assignable Knob. This lets you use the Jog Wheel to adjust the values of any control the cursor hovers over in Cubase or Nuendo, such as faders, pan knobs and plug-in controls. Other applications require a mouse-click on the control to allow adjustment (such as Logic Pro).

The Jog Wheel can also be used to adjust control room volume for certain applications (such as Studio Monitor Express, Cubase, and Nuendo).

The Jog Wheel can be programmed to generate a Custom Command to send keystrokes into the application. See “Custom Jog Command” on page 23.

All Wheel functions (including positioning, zooming, trimming, Assignable Knob, Control Room Volume, and Custom) are initiated by pressing an assignable key.

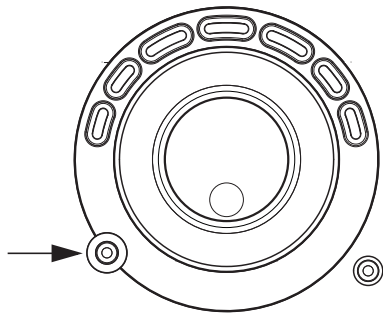
 For more information on how to set up these programmable functions in EuControl and which applications allow them, see Chapter 4, “Soft Keys.”

Shuttle Ring

The Shuttle Ring lets you shuttle through the session or project timeline. The farther it is turned, the faster it shuttles. The Shuttle Ring can also have different functions assigned. See Chapter 4, “Soft Keys” for more information.

Application/Workstation Key

The **Application/Workstation** key lets you quickly toggle Artist Transport focus between the two most recently used applications, or cycle through all open applications. This key also lets you use the Artist Transport to control applications running on a second computer (referred to in this guide as a *workstation*).



Application/Workstation key

To toggle between the two most recently used open applications:


- Press the **Application/Workstation** key.

To cycle through all open applications:

- Hold down the **Application/Workstation** key and turn the Jog wheel in either direction.

To control an application on a different computer:

- 1 Use EuControl software to create a list of “workstations” to switch between.

 See “Workstations” on page 29 for more information.

- 2 Press and hold the **SHIFT** key and press the **Application/Workstation** key to attach Artist Transport to another workstation. While attached to a second workstation, your keyboard and mouse can be configured to control the additional workstation and not your primary workstation.

 See “Redirect Keyboard and Mouse Control to Attached External Workstation” on page 29 for more information.

SHIFT Key

The **SHIFT** key lets you access a secondary function for each key, if one has been assigned. Press and hold the **SHIFT** key and press another key to access the secondary function.

The **SHIFT** key can be used in conjunction with the **SHOW** key to display the alternate function. Since this may require holding down three keys, it is useful to lock the **SHOW** key (see “Locking the SHOW Key” on page 12) or the **SHIFT** key (see “Locking the Shift Key” on page 16).

Locking the Shift Key

The **SHIFT** key can be locked to access multiple alternate key functions without holding the key down.

- 1 Press and release the **SHIFT** key quickly and then press another key to access its alternate function. Continue in this manner until finished.
- 2 Press and release the **SHIFT** key quickly again to restore normal operation.

If you have another Artist Series media controller connected to the same instance of EuControl as your Artist Transport, you can also lock the **SHIFT** key by pressing two **SHIFT** keys down simultaneously. These keys can be on different devices. Unlock the **SHIFT** key by pressing and releasing one quickly on any device. See “My Surfaces” on page 28 for more information.

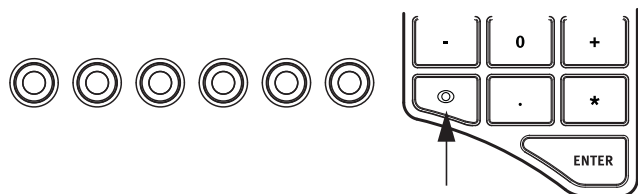
Common Tasks

The following examples demonstrate some common tasks you can perform with Artist Transport.

Show Key


Various functions can be assigned to Artist Transport keys. The Show key lets you browse the key assignments:

- 1 Press and hold the **SHOW** key.



Soft keys and SHOW key

- 2 Press another key, such as one of the six Soft Keys just to the left of the **SHOW** key. That key's function is shown on the Artist Transport display and in EuControl.

 See Chapter 4, “Soft Keys” to learn how to assign functions to keys.

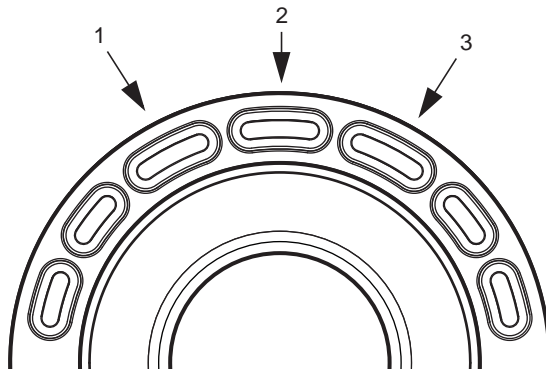
Jog Wheel

- 1 Press and hold the **SHOW** key and then press the left-most Soft Key.
- 2 Jog is shown on the display. If not, the application does not support the jog function.
- 3 Release the **SHOW** key and the left-most Soft Key.
- 4 Press the left-most Soft Key, and turn the Jog wheel to move through the timeline.
- 5 The left-most Soft Key lights up to show that the Jog wheel is controlling the Jog function.

Transport Keys

Most applications use the following default assignments for the Transport keys, but all keys can be reprogrammed.

Video Applications and Soundtrack Pro



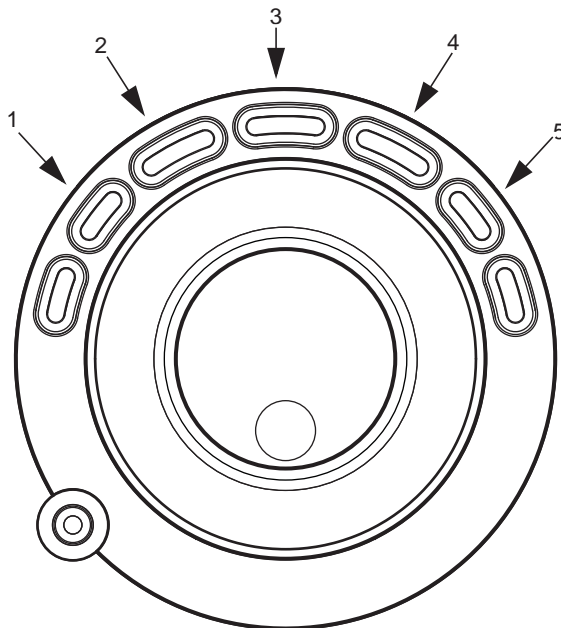
Default factory Transport Key assignments for video applications

1 Reverse Play

2 Stop

3 Play

Audio Applications



Default factory Transport Key assignments for audio applications

1 Rewind

2 Fast Forward

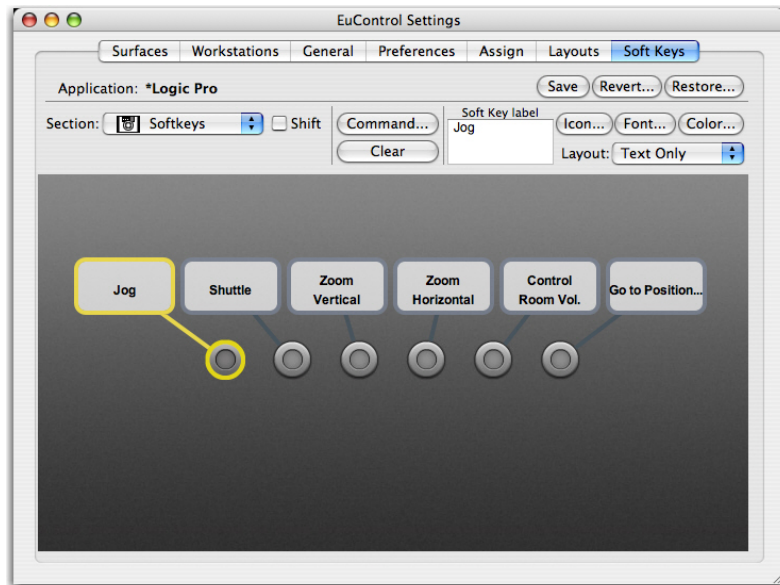
3 Stop

4 Play

5 Record

Chapter 4: Soft Keys

In EuControl software, the Soft Keys tab controls assignments for the Artist Transport Soft Keys.



EuControl Settings, Soft Keys tab



To edit an application's assignments in EuControl, that application must be top-most immediately before switching to EuControl.

The application listed in the upper left of the window is called in focus because it:

- Is controlled by Artist Transport
- and –
- Receives computer keystrokes and mouse events.

Artist Transport can control different applications, each with its own Soft Key assignments. Since Artist Transport responds dynamically as the focussed application changes, you may see the Soft Keys assignments change in EuControl. Simply switch the focus back to the desired application and then switch back to EuControl to restore them. Although an application's unsaved Soft Key edits are preserved between focus changes until you quit the application, you should save your work often.

Soft Key assignments are stored in an Application Set for each application. Be sure to check that the proper application is focussed before using Save, Restore, or Revert.

Save

Clicking Save permanently stores the Application Set. However, changes to the Soft Key assignments are retained even without clicking Save until you quit EuControl, at which point you will be prompted to save.

Revert

Click Revert to revert to the Application Set last saved. This discards any changes made since the last Save command or EuControl was last started.

Restore

Click **Restore** to restore the Application Set to its factory default settings.

Section

Click the **Section** popup menu to select the section of Artist Transport to assign. Artist Transport sections are Numpad, Soft Keys, and Wheel.



Artist Transport users should ignore the Surface and Touchscreen sections, which are for Artist Control only.

Shift

Functions can be assigned to the **SHIFT** key layer. Click on the **Shift** checkbox to show the **SHIFT** key assignments.

Soft Key Label

Select a Soft Key (its outline highlights yellow) and type a label in this text field.

Layout

Select Text Only, Icon Only, or Text and Icon from the Layout pop-up menu.

Icon

Click the Icon button and select an icon from the dialog.

Font

Click the Font button and select a font from the dialog.

Color

Click the Color button and select a color from the dialog for the selected key. This color is used to color the key in EuControl, not on the surface.

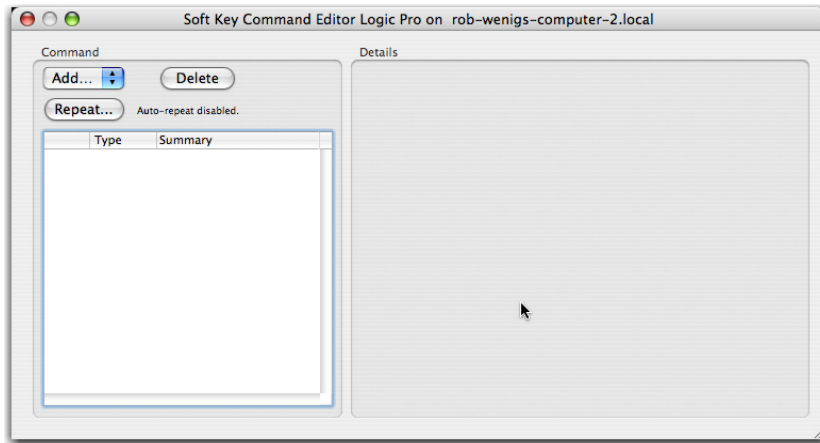
The Soft Keys light yellow in their active states and are unlit otherwise. The Transport keys can each light with two colors. The two outer keys on each side can light yellow or red. The three center keys can light yellow or green. If an alternate color is selected, the surface key uses the closest allowable color (yellow/green or yellow/red) or defaults to yellow if the color selected is not close to one of the two allowable colors.

Clear

Press the **Clear** button to delete the function assigned to the selected key. Once cleared, pressing the selected key does nothing, unless it is on the Numeric Keypad, in which case the key reverts to entering a numeric value (see “Numeric Keypad” on page 14 for more information).

Command

Select a Soft Key (its outline highlights yellow on-screen) and click **Command** to view or edit the command(s) assigned to that Soft Key. Double-clicking the key is a shortcut to open the command editor. See “Command Types” on page 22 for information on each Command type and how to create a new command.



Soft Keys Command editor

Add

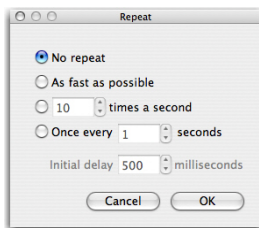
Click **Add** to select a command type. Multiple commands can be added to the same key, to create a macro. See “Command Types” on page 22 to learn about each command type.

Delete

Click **Delete** to delete the selected command.

Repeat

Click **Repeat** to let a command be repeated if the Soft Key is held down. For example, if the key executes a Nudge command and Repeat is assigned, holding down the Soft Key continues to Nudge. Numeric fields in the Repeat dialog accept integer values only.



Repeat dialog

The Repeat controls are:

No Repeat The key does not repeat (default setting).

As fast as possible Repeats as fast as the computer allows.

[x] times per second Repeats the key x times per second.

Once every [x] seconds Repeats the key every x seconds.

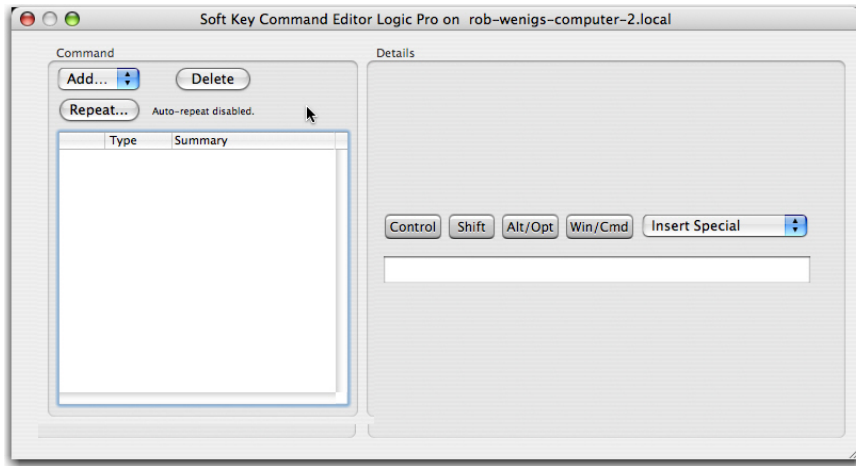
Initial delay [x] milliseconds Specifies a delay in ms before starting to repeat (available only when No Repeat is *not* selected).

Command Types

Artist Transport uses three of five EuControl command types: Key, EUCON, and Wheel. (Page and MC are used only by Artist Control and MC Pro.)

Key

Key commands can execute menu commands, other application-specific commands that have key equivalents, and even insert a specific text string if specified.



Key Command editor

Type keystrokes into the text field in the Details pane. Use the Control, Shift, Alt/Option, and Start/Cmd modifiers along with the Insert Special menu to finish creating the key command.

EUCON

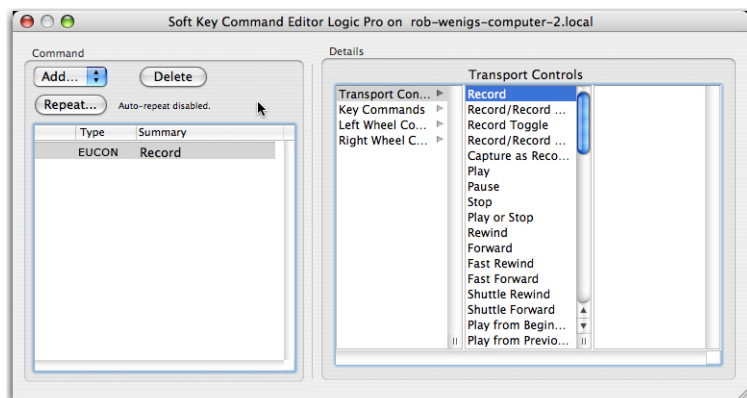
The EUCON command types under the Details column are specific to each application.

The Record command is created in the default application set for most, if not all, applications. This section shows how to create a new Soft Key using the Record command as an example. This example uses Logic Pro so the dialogs for your application may look different.

To create a new Soft Key using the Record command:

- 1 Select Soft Keys or Wheel from the Section pop-up menu.
- 2 Double-click the desired Soft Key.
- 3 Select EUCON from the Add pop-up menu.
- 4 Select Transport Controls from the left column. EUCON commands automatically label the button but do not select an icon.
- 5 Select Record from the middle column.

The following figure shows the completed Record command.



Creating a command in the Soft Keys tab

Wheel Commands

The Jog Wheel and Shuttle Ring can be assigned to perform commands other than their typical jog and shuttle functions using additional Wheel Commands. It is important to note that there are two steps:

- The desired Wheel Command must be selected and assigned to a Soft Key.
- That Soft Key must be pressed to invoke the function.

The following examples demonstrate this process, using Logic Pro (the dialogs for your application may look different).

A *Be careful. These examples can overwrite Soft Key assignments if you click Save. When finished, click Restore to restore the Soft Key assignments to the state before you edited them. You can revert to the factory default assignments by clicking Revert.*

Custom Jog Command

Turning the Jog Wheel can insert keystrokes into an application. This example inserts up and down arrows when the wheel is turned left and right, respectively. In most audio applications, this scrolls through the displayed tracks.

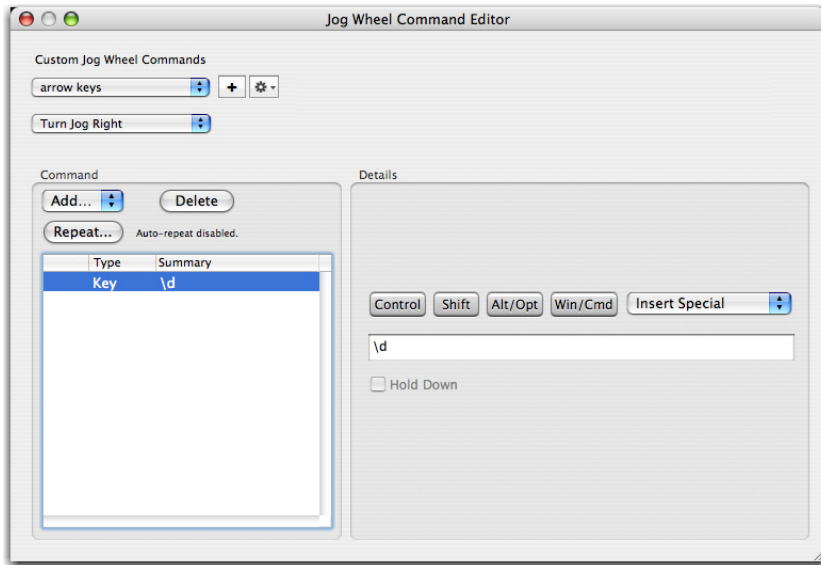
To create a custom Jog command:

- 1 Select Wheel from the Section pop-up menu. The Soft Key Wheel window opens.



Soft Key Wheel

2 Double-click the Jog label. The Jog Wheel Command Editor dialog opens.

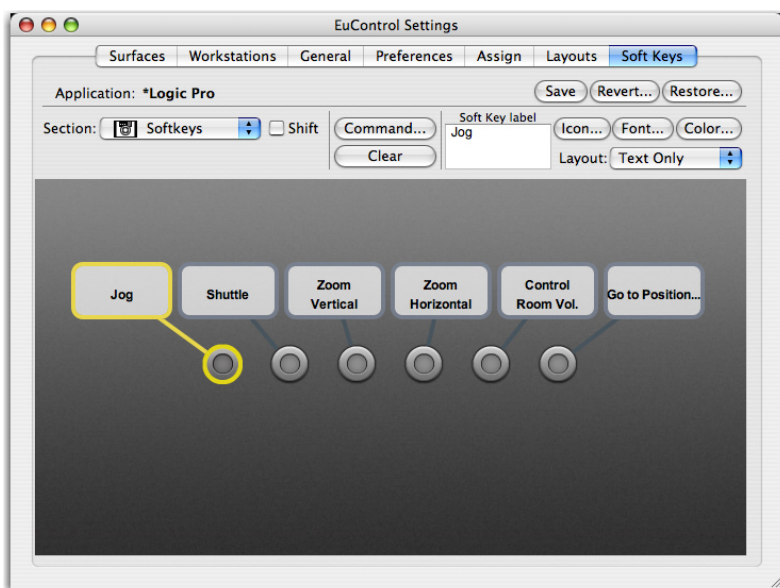


Jog Wheel Command editor

- 3 Click the + and enter arrow keys as the name for the command. Note that the lower pop-up is set to Turn Jog Right. The Jog Wheel must be programmed to turn right and left.
- 4 Select the Key command type from the Add pop-up menu.
- 5 Select Down Arrow from the Insert Special pop-up menu. If you have assigned the command for the Jog Wheel to turn right, now assign it to turn left.
- 6 Select Turn Jog Left and select the Key command type from the Add pop-up menu.
- 7 Select Up Arrow from the Insert Special pop-up menu.
- 8 Close the Jog Wheel Command Editor. You have completed the programming for this Wheel Command.

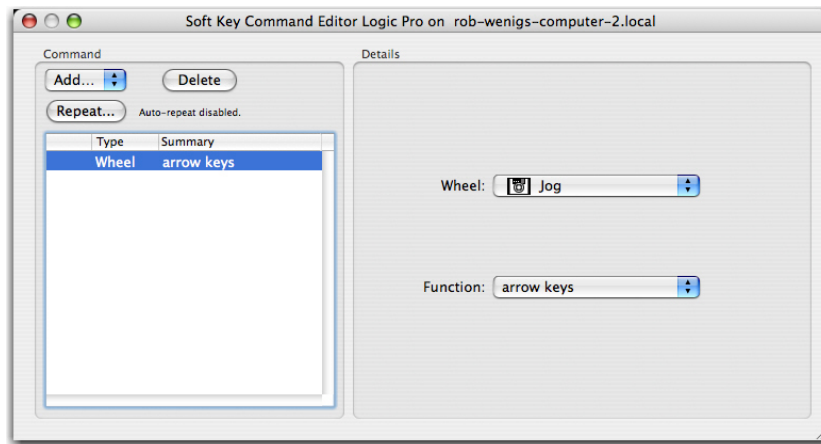
To select a Soft Key to press to assign it to the Jog Wheel.

- 1 Select Soft Keys from the Section pop-up. The Soft Keys dialog opens.



Soft Keys tab

- 2 Double-click the Jog Soft Key. The Soft Key Command Editor dialog opens.



Soft Key Command Editor configured for Custom Wheel Command

- 3 Select the Wheel command type from the Add pop-up menu.
- 4 Select Jog from the Wheel pop-up menu. Make sure to select the Artist Transport Jog (top) and not Artist Control (bottom). Their icons are beside each to make this clear.
- 5 Select Function > Custom > arrow keys.
- 6 Close the Soft Key Command Editor dialog.
- 7 Press the **Jog** Soft Key and spin the Jog Wheel to experiment with the new Wheel command.

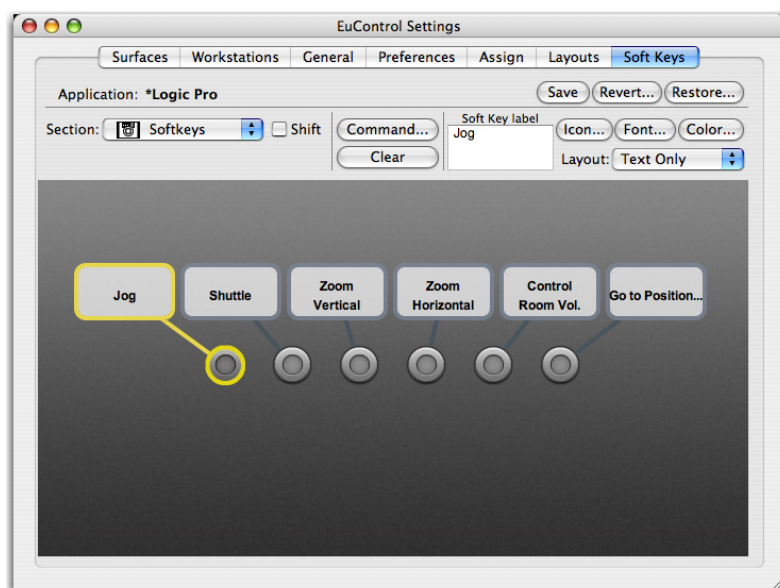
To set the Wheel Sensitivity to suit the command, see “Wheel Sensitivity” on page 30.

Assignable Knobs

In some applications, the Jog Wheel can control knobs and sliders. Some applications require clicking on the control while others allow the cursor to hover over it.

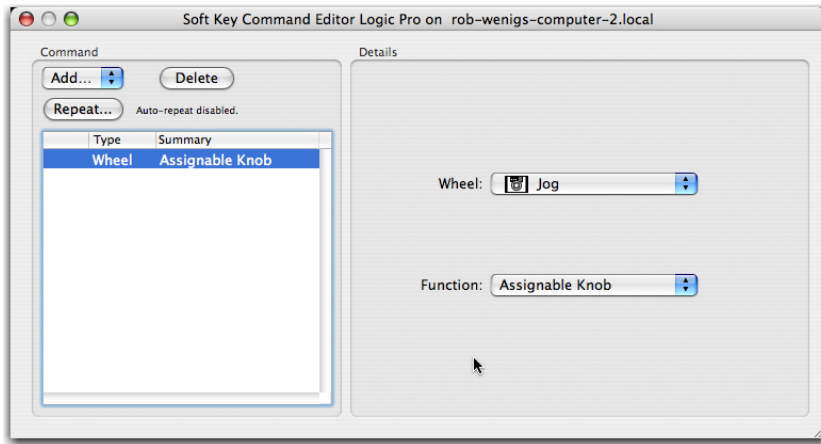
To control knobs and sliders with the Jog wheel:

- 1 Select Soft Keys from the Section pop-up. The Soft Keys tab opens.



Soft Keys tab

- 2 Double-click the Jog Soft Key. The Soft Key Command Editor opens.



Soft Key Command Editor configured for Assignable Knob

- 3 Select Jog from the Wheel pop-up menu. Make sure to select Artist Transport Jog (top) and not the Artist Control (bottom). Their icons are beside each to make this clear.
- 4 Select Assignable Knob from the Function pop-up menu. The following figure shows the Function menu after selecting the Assignable Knob Wheel Command.
- 5 Close the Soft Key Command Editor.
- 6 Press the **Jog** Soft Key to use the Assignable Knob function with the Jog Wheel.

Chapter 5: EuControl

EuControl is launched automatically upon starting your computer and runs in the background. EuControl is responsible for finding, linking, and communicating with all Artist Series media controllers on the network.

Accessing EuControl Settings

To open the EuControl Settings window:

- Do one of the following:
 - On Mac, click the EuControl icon on the taskbar and select EuControl Settings.
 - On Windows, click the EuControl icon in the Task or System tray (Windows) and select EuControl Settings. Unused icons will be shown in the Hidden icons view.

Only one instance of EuControl can run on a workstation. However, multiple workstations on a single network can each run EuControl. Each instance of EuControl can connect a single Artist Transport, a single Artist Control, and up to four Artist Mixes on the network. These multiple devices act together as a single control surface. Once connected, these Artist Series media controllers are not available to other instances of EuControl until relinquished.

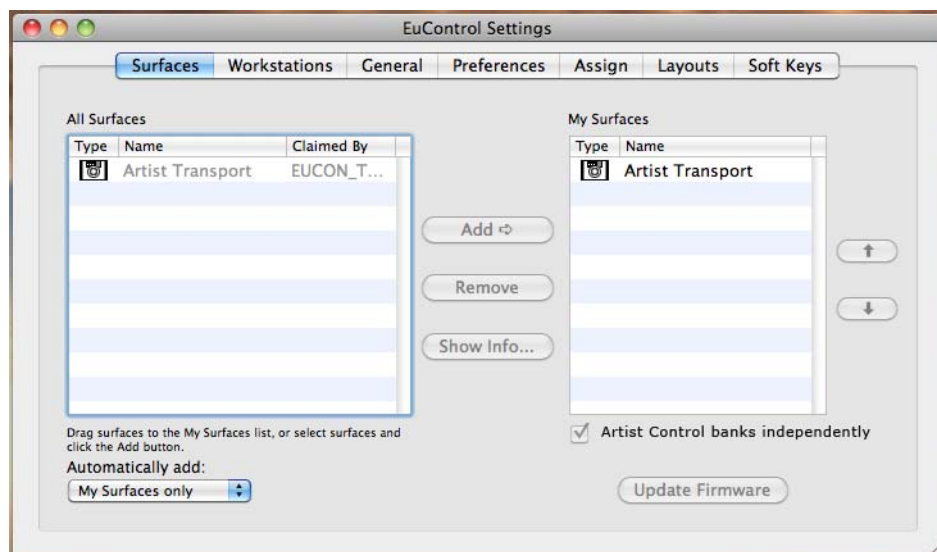
The tabs are discussed in the order (left to right) as they appear at the top of the EuControl Settings dialog.



Some EuControl features pertain only to the Artist Mix and Artist Control, not Artist Transport. These are noted at the beginning of each section.

Surfaces

The Surfaces tab shows all Artist media controllers on your network and those connected to your instance of EuControl.



Surfaces tab

The feature Control Unit banks independently is available for Artist Control only.

All Surfaces

All Surfaces shows all Artist Series controllers on the network. A device shown in light gray is already connected either to your own or another instance of EuControl running on a different workstation. In both cases, it is not selectable.

My Surfaces

My Surfaces shows the Artist Series controllers connected to your instance of EuControl. There can be one Artist Control, one Artist Transport, and up to four Artist Mixes in the My Surfaces list, linked into a single large surface.

The top-to-bottom order corresponds to the left-to-right order of the surfaces, respectively. The leftmost surface has fader strip 1. Use the up and down buttons to reorder the list.

Each Artist media controller can be renamed by double-clicking the existing name and typing a new name.

Add

Click Add to add the selected All Surfaces entry to My Surfaces. This connects this Artist media controller to your instance of EuControl. You can also click and drag an Artist media controller from All Surfaces to My Surfaces.

Add is disabled if all Artist media controllers in All Surfaces are connected to any instance of EuControl.

Remove

Click Remove to remove the selected surface from My Surfaces and make it available to other instances of EuControl.

Remove is disabled if no surface is selected.

Automatically Add

The Automatically Add menu has two settings that control what happens to stored Surfaces between shutdown and startup.

All Surfaces (Default) Best used when you are the only person running EuControl in your home or studio. It provides an easy plug-and-play experience by automatically adding your All Surfaces list to your My Surfaces list so you never have to manually edit the My Surfaces list.

My Surfaces Only Useful in facilities where other EuControl users are on your network. When EuControl starts, only the surfaces from your My Surfaces list are added. Because a surface can only be claimed by one user at a time, this avoids claiming another user's controller.

Update Firmware

Each time a new version of EuControl is installed, each Artist Transport, Artist Control, and Artist Mix in your system may need its firmware updated. The firmware is embedded in EuControl so an Internet connection is not required.

To update firmware:

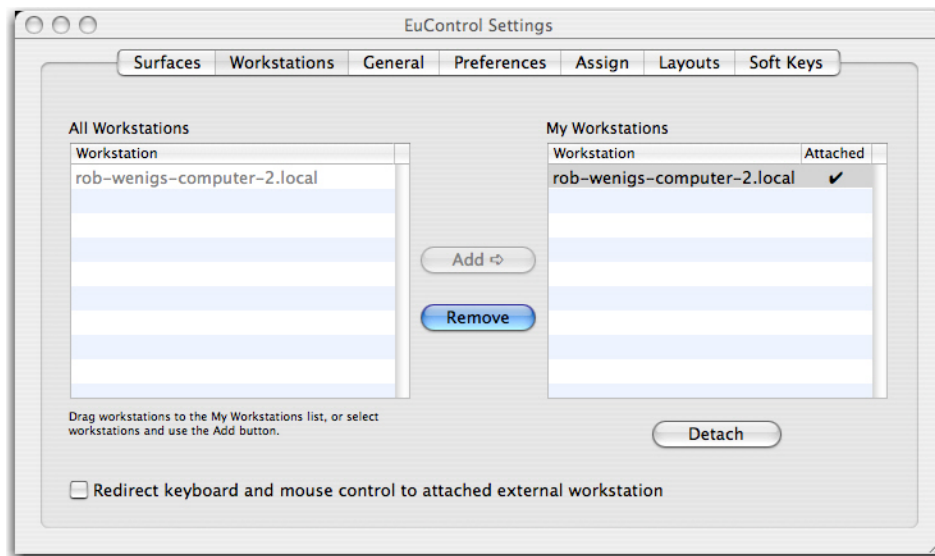
- 1 Select each Artist Series controller in the My Surfaces list (Shift-click to select multiple devices).
- 2 Press Update Firmware to update their firmware. If a dialog displays a message that the firmware is up to date, no further action is necessary.
- 3 Follow the instructions in the EuControl dialog box.
 - The Artist media controllers must be plugged into a working power source.
 - Do not power off any Artist media controllers during the update or attempt to interrupt the update.
 - The status for each Artist media controller being updated is displayed on that device as well as in the EuControl dialog box.

Show Info

Select an Artist Series controller and click Show Info to display the name and hardware/software information for Artist Transport on-screen.

Workstations

An Artist Series controller can control applications running on a second computer, referred to in this guide as a workstation. The Workstations tab establishes the list of workstations that the **WORKSTATION** key cycles through. Any workstation running EU-CON software can be in this list, including those controlled by the System 5-MC, MC Pro, and Artist Control.



Workstations tab

All Workstations

All Workstations lists all EUCON-enabled workstations on the network. If the workstation is already in the My Workstations list, it is shown in gray and cannot be selected.

My Workstations

My Workstations lists the workstations that can be attached to by pressing the **Workstation** key (**SHIFT+Application/Workstation**).

It is possible to put a workstation in the My Workstations list that is already attached to another instance of EuControl running on another computer. It cannot be attached here until it is unattached from the other instance of EuControl. This lets multiple users share workstations without having to frequently edit their My Workstation list.

Add

Click Add to add the selected workstation from the All Workstations list to the My Workstations list. If the workstation is already in the My Workstations list, it is gray and cannot be selected.

Remove

Click Remove to remove the selected workstation from the My Workstations list.

Attach/Detach

Select a workstation in the My Workstations list and click Attach. A check mark appears in the Attach column next to that workstation. This workstation is now communicating with the Artist media controller(s) connected to your instance of EuControl. If the selected workstation is already attached, the button displays Detach.

Redirect Keyboard and Mouse Control to Attached External Workstation

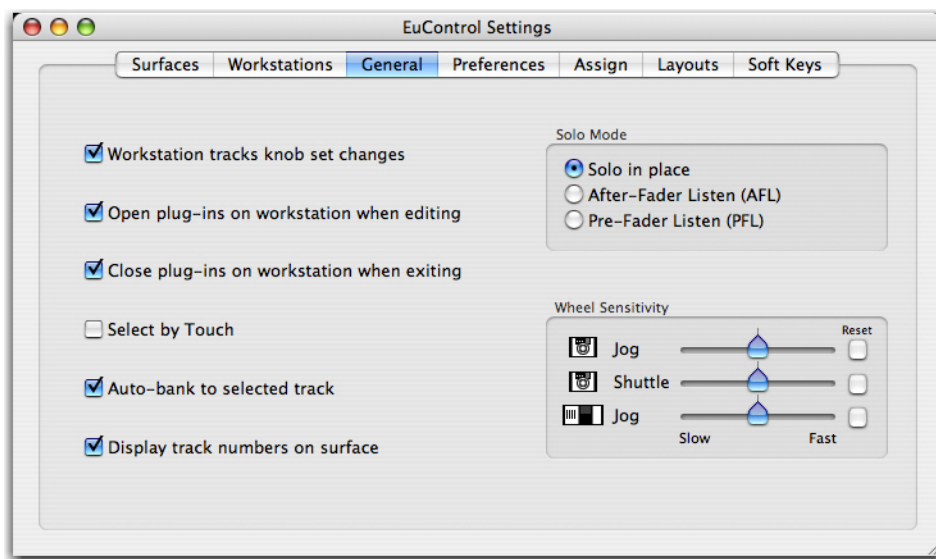
Your computer keyboard and mouse can control a second external workstation, if desired. Select this option to redirect keyboard and mouse control to the attached workstation. Note that the keyboard and mouse will no longer control your primary computer.

You can manually toggle control back and forth between your primary workstation and the attached external workstation by pressing Control+Option+\\ (Mac), or Control+Alt+\\ (Windows).

The Redirect Keyboard and Mouse Control to Attached External Workstation option must be checked *before* adding the workstation to the My Workstations list. If it is toggled ON after adding the workstation it will have no affect. Only workstations added with the option checked will respond.

General

This tab controls how the Artist Series controller and application software work together.



General tab

The following features pertain to Artist Mix and Artist Control, not Artist Transport:

- Workstation tracks knob set changes.
- Open plug-ins on workstation when editing
- Close plug-ins on workstation when editing
- Select by touch
- Auto-bank to selected track
- Display track numbers on surface
- Solo Mode

See the *Artist Mix* or *Artist Control User Guide* to learn about these features.

Wheel Sensitivity

The sensitivity of the Jog Wheel and Shuttle Ring can be precisely adjusted using the Wheel Sensitivity sliders. The top two sliders pertain to the Artist Transport, the bottom is the Jog Wheel for the Artist Control.

The center position is the default for each control. Click and drag a slider to move it right for faster response or left for a slower, more controlled movement. Click the Reset button to restore the center position.

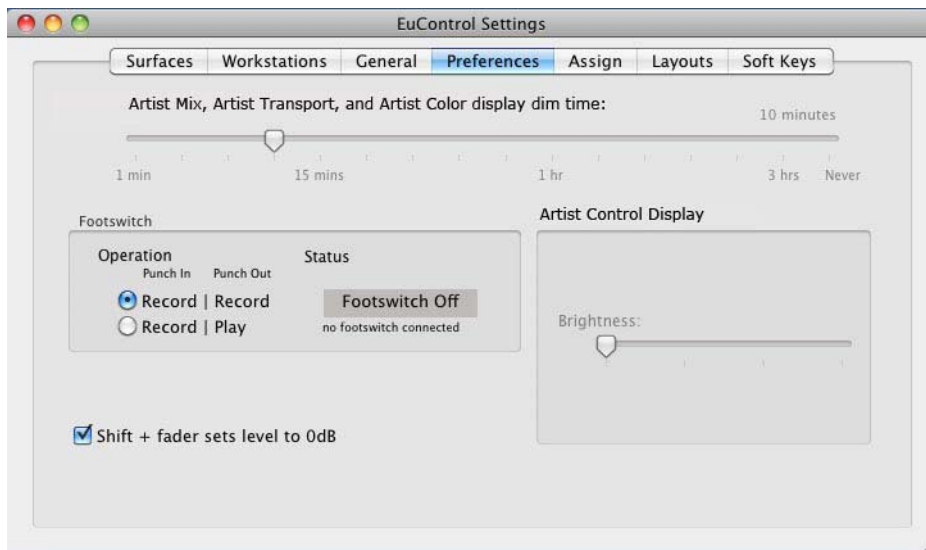
The name of the currently focused application is shown above the sliders (the application that will be affected by adjusting Wheel Sensitivity). If the controls have been locked to a specific application, the display will list it and identify it as the application being adjusted. For more information on locking, see “Lock to Application” on page 32.

Global or Application Specific

Click to enable the Global option to maintain a single set of your Wheel Sensitivity settings to be available regardless of the current application.

Click to enable the Application Specific option to be able to have unique Wheel Sensitivity settings in each application you use. To store settings, switch to your other application, open EuControl Settings > General, and adjust the Wheel Sensitivity sliders for that environment.

Preferences



Preferences tab

The following features pertain to Artist Mix and Artist Control, not Artist Transport:

- Footswitch
- Artist Control Display

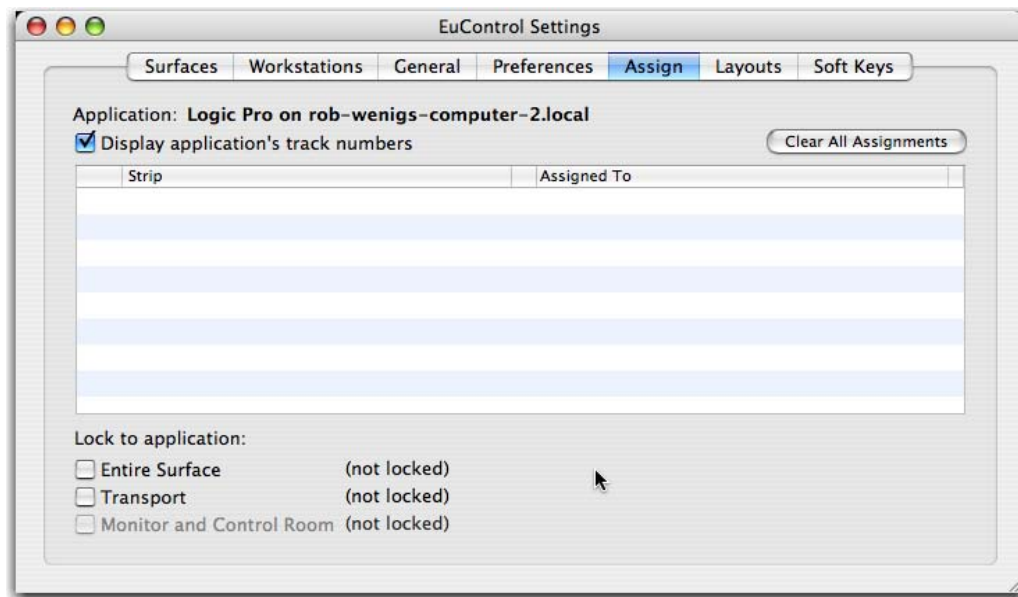
See the *Artist Mix* or *Artist Control User Guide* to learn about these features.

Artist Mix, Artist Transport, and Artist Color Display Screen Dim Time

Drag the slider to set the amount of inactive time before the display screens of any Artist Mix controllers and Artist Transport in your system dims to half intensity.

Assign

This tab manages how tracks are assigned to strips on Artist Control or Artist Mix (not Artist Transport). By default, tracks are automatically assigned in banks of four.



Assign tab

The following features pertain to the Artist Mix and Artist Control, not the Artist Transport:

- Display application's track numbers
- Clear All Assignments
- Monitor and Control Room

See the *Artist Mix* or *Artist Control User Guide* to learn about these features.

Lock to Application

This feature lets the transport controls and/or the entire surface to stay locked to the application listed at the top-left of the dialog, even when that application is not focussed. The locked-to application also is the only application that will be affected by adjusting the EuControl Wheel Sensitivity settings.

Entire Surface Select this checkbox to lock the entire surface, including those of all linked Artist media controllers, to the listed application.

Transport Select this checkbox to lock the transport controls of Artist Transport and Artist Control to the listed application. All transport controls, including jog/shuttle wheels, are locked when selected.

 You can adjust the sensitivity of the wheels on both Artist Transport and Artist Control in the General tab. See “Wheel Sensitivity” on page 30.

Monitor and Control Room select this checkbox to lock the Monitor and Control Room controls to the listed application.

Layouts

This feature pertains to Artist Mix and Artist Control, not Artist Transport. See the *Artist Mix User Guide* or *Artist Control User Guide*.

Soft Keys

This tab controls assignments and programming for all Artist Transport keys (including the Jog Wheel, Shuttle Ring, and Numeric Pad), not just the six Soft Keys.



For information on configuring the Soft Keys on Artist Transport, see Chapter 4, “Soft Keys.”

Chapter 6: Setting IP Addresses

Most Artist Transport users will never have to set a static Internet Protocol (IP) address but in the rare cases that require it, follow the instructions in this section.

Normally Artist Transport uses Dynamic Host Configuration Protocol (DHCP) to obtain its IP address, typically from a router. Artist Transport reverts to link-local addressing to generate an IP address if a DHCP server is not found on the network, such as when Artist Transport is connected directly to a computer with an Ethernet cable. Both of these methods of obtaining IP addresses can be overridden by supplying a static IP address, which Artist Transport will then use in all cases when powered on.

⚠ *Attempt this only if you have prior experience configuring a network.*

To set a static IP address:

- 1 While holding down the leftmost two Soft Keys simultaneously, press and release the **POWER** switch. Continue to hold the Soft Keys down until the display lights.
- 2 Turn the Jog Wheel clockwise to change the underlined value from yes (default) to no.



Use DHCP yes (left); Use DHCP no (right)

The + and – keys on the Numeric Keypad can be used instead of the Jog Wheel to decrease or increase the value, respectively.

- 3 Press the **ENTER** key to move the cursor to the next screen, in this case the first field of the IP Address screen.
- 4 Press the **ENTER** key to cycle the cursor back to a previous field or screen to change a parameter to a different value.
- 5 Use the Jog Wheel to set the first field of the IP Address. Alternately, press the + or – keys on the Numeric Keypad to increment or decrement the value, respectively. You can also enter the number directly using the Numeric Keypad.
- 6 Press the **ENTER** key to move the cursor to the second field.
- 7 Rotate the Jog Wheel to set the second field of the IP address.



IP Address displays

- 8 Set the remaining IP Address fields.

- 9 After setting the last IP Address field, press the **ENTER** key to move the cursor to the first field of the Subnet Mask screen.



Subnet Mask display

- 10 Set the Subnet Mask using the same techniques described in the previous steps.
- 11 Press the two left-most Soft Keys simultaneously to save this static IP address. Power Artist Transport off and on to use the new IP address.

To cancel any changes made to the IP address at any time, power off Artist Transport before pressing the two left-most Soft Keys simultaneously.

Appendix A: Compliance Information

Environmental Compliance

Disposal of Waste Equipment by Users in the European Union



This symbol on the product or its packaging indicates that this product must not be disposed of with other waste. Instead, it is your responsibility to dispose of your waste equipment by handing it over to a designated collection point for the recycling of waste electrical and electronic equipment. The separate collection and recycling of your waste equipment at the time of disposal will help conserve natural resources and ensure that it is recycled in a manner that protects human health and the environment. For more information about where you can drop off your waste equipment for recycling, please contact your local city recycling office or the dealer from whom you purchased the product.

Proposition 65 Warning

⚠ *This product contains chemicals, including lead, known to the State of California to cause cancer and birth defects or other reproductive harm. Wash hands after handling.*

Perchlorate Notice

This product may contain a lithium coin battery. The State of California requires the following disclosure statement: "Perchlorate Material – special handling may apply, See www.dtsc.ca.gov/hazardouswaste/perchlorate."

Recycling Notice



EMC (Electromagnetic Compliance)

This model Artist Transport complies with the following standards regulating interference and EMC:

- FCC Part 15 Class B
- EN 55022 Class B
- EN 55024 Class B
- AS/NZS CISPR 22 Class B
- CISPR 22 Class B

FCC Compliance for United States

Radio and Television Interference

Communication Statement

NOTE: This equipment has been tested and found to comply with the limits for a Class B digital device, pursuant to Part 15 of the FCC Rules. These limits are designed to provide reasonable protection against harmful interference in a residential installation. This equipment generates, uses, and can radiate radio frequency energy and, if not installed and used in accordance with the instructions, may cause harmful interference to radio communications. However, there is no guarantee that interference will not occur in a particular installation. If this equipment does cause harmful interference to radio or television reception, which can be determined by turning the equipment off and on, the user is encouraged to try and correct the interference by one or more of the following measures:

- Reorient or relocate the receiving antenna.
- Increase the separation between the equipment and receiver.
- Connect the equipment into an outlet on a circuit different from that to which the receiver is connected.
- Consult the dealer or an experienced radio/TV technician for help.

Any modifications to the unit, unless expressly approved by Avid, could void the user's authority to operate the equipment.

Australian Compliance



Canadian Compliance

This Class B digital apparatus meets all requirements of the Canadian Interference-Causing Equipment Regulations.

Cet appareil numérique de la classe B respecte toutes les exigences du Règlement sur le matériel brouilleur du Canada.

CE Compliance

(EMC and Safety)



Avid is authorized to apply the CE (Conformité Européenne) mark on this compliant equipment thereby declaring conformity to EMC Directive 2004/108/EC and Low Voltage Directive 2006/95/EC.

Safety Compliance

This equipment has been tested to comply with USA and Canadian safety certifications in accordance with the specifications of UL Standards: UL60950-1:2007, 2nd Edition and Canadian CAN/CSA C22.2 60950-1-07, 2nd Edition. Avid Inc. has been authorized to apply the appropriate UL and CUL mark on its compliant equipment.

Warning



Important Safety Instructions

- 1) Read these instructions.
 - 2) Keep these instructions.
 - 3) Heed all warnings.
 - 4) Follow all instructions.
 - 5) Do not use this equipment near water.
 - 6) Clean only with dry cloth.
 - 7) Do not block any ventilation openings. Install in accordance with the manufacturer's instructions.
 - 8) Do not install near any heat sources such as radiators, heat registers, stoves, or other equipment (including amplifiers) that produce heat.
 - 9) Do not defeat the safety purpose of the polarized or grounding-type plug. A polarized plug has two blades with one wider than the other. A grounding type plug has two blades and a third grounding prong. The wide blade or the third prong are provided for your safety. If the provided plug does not fit into your outlet, consult an electrician for replacement of the obsolete outlet.
 - 10) Protect power cords from being walked on or pinched particularly at plugs, convenience receptacles, and the point where they exit from the equipment.
 - 11) Only use attachments/accessories specified by the manufacturer.
 - 12) For products that are not rack-mountable: Use only with a cart, stand, tripod, bracket, or table specified by the manufacturer, or sold with the equipment. When a cart is used, use caution when moving the cart/equipment combination to avoid injury from tip-over.
 - 13) Unplug this equipment during lightning storms or when unused for long periods of time.
 - 14) Refer all servicing to qualified service personnel. Servicing is required when the equipment has been damaged in any way, such as power-supply cord or plug is damaged, liquid has been spilled or objects have fallen into the equipment, the equipment has been exposed to rain or moisture, does not operate normally, or has been dropped.
 - 15) For products that are a Mains powered device:
The equipment shall not be exposed to dripping or splashing and no objects filled with liquids (such as vases) shall be placed on the equipment.
- Warning!** To reduce the risk of fire or electric shock, do not expose this equipment to rain or moisture.
- 16) For products containing a lithium battery:
CAUTION! Danger of explosion if battery is incorrectly replaced. Replace only with the same or equivalent type.
 - 17) For products with a power switch:
The main power switch is located on the top panel of Artist Transport. It should remain accessible after installation.
 - 18) The equipment shall be used at a maximum ambient temperature of 40° C.

Korean EMC Compliance

이 기기는 업무용 (A 급) 전자파적합기기로서 판매자 또는 사용자는 이 점을 주의하시기 바라며, 가정외의 지역에서 사용하는 것을 목적으로 합니다.



Avid
2001 Junipero Serra Boulevard
Daly City, CA 94014-3886 USA

Technical Support (USA)
Visit the Online Support Center at
www.avid.com/support

Product Information
For company and product information,
visit us on the web at www.avid.com